

# PM OLED CELL Aging System

## OAS - 20

Good for mass production of PM-OLED cells !



PM-OLED Aging System  
OAS-20

### Features

● **Cycle Time for mass production can be shortened.**

The OAS-20 is possible to age a maximum of 720 sheets of 1" panels simultaneously and is good for mass production.

● **Efficient inspections:**

Both leakage measurement and visual inspections can be made at one aging.

● **Preprogrammed conditions of each panel**

Each panel can be turned ON and OFF in accordance with preprogrammed conditions.

● **Protection of over-current**

Protection circuits in the buffer unit for over-current protect the device.

● **Monitoring**

Easy to grasp the status by displaying situations of all pallets and panels.

● **Concentrated data administration** (Details need to have a meeting separately.)

Such data as results from aging can be transmitted to an external PC via LAN (EtherNet) for concentrated administration.

● **Excellent temperature uniformity**

The side-flow system temperature chamber can achieve high temperature uniformity.

● **Very fast temperature rise and fall**

By the use of a big capacity heater and cooler, the OAS-20 realized very short rise and fall time.

# Basic Specifications

## 【Chamber】

- Environment temperature of use : from +10degree C to +35degree C (except condensation)
- Setting range of temperature: from +25degree C to +90degree C
- Temperature distribution of surface area of panel: ±7.0degree C (Lighting up of OLED)
- Temperature rise time : +25degree C → +90degree C : within 30min, +25degree C → +65degree C : within 25min (Lighting up of OLED)
- Temperature fall time : +90degree C → +50degree C : within 30min, +65degree C → +45degree C : within 15min (Lighting up of OLED)

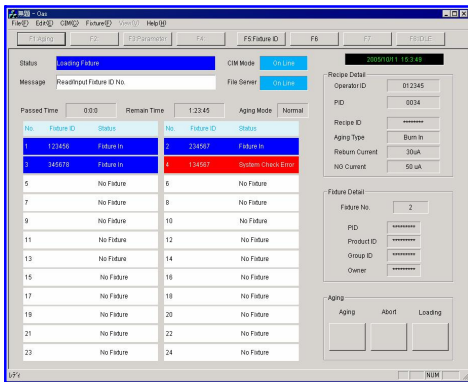
## 【Controller】

- Output range: power voltage ±25.0V current ±200.0mA (DC ±100mA)
- Determining area: Column power voltage : ±200.0mA accuracy rdg. ±1% ±0.5mA  
Leak power voltage: 0 to 1.000 μA accuracy rdg. ±1% ±0.005 μA or less  
0 to 200.0 μA accuracy rdg. ±1% ±0.5 μA or less
- Time of rise-fall: 1000ns or less
- Driving signal: frequency range 10~1000Hz Duty rate 0%~100.0%

## 【Software】

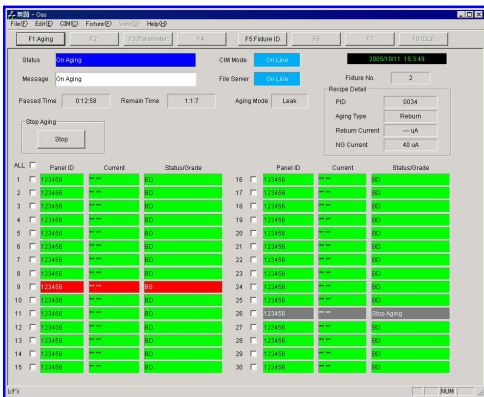
### Screen of Aging

Display all fixture of Aging



### Details screen

Display each panel of fixture with choice by screen of Aging



## Flow chart of Aging

